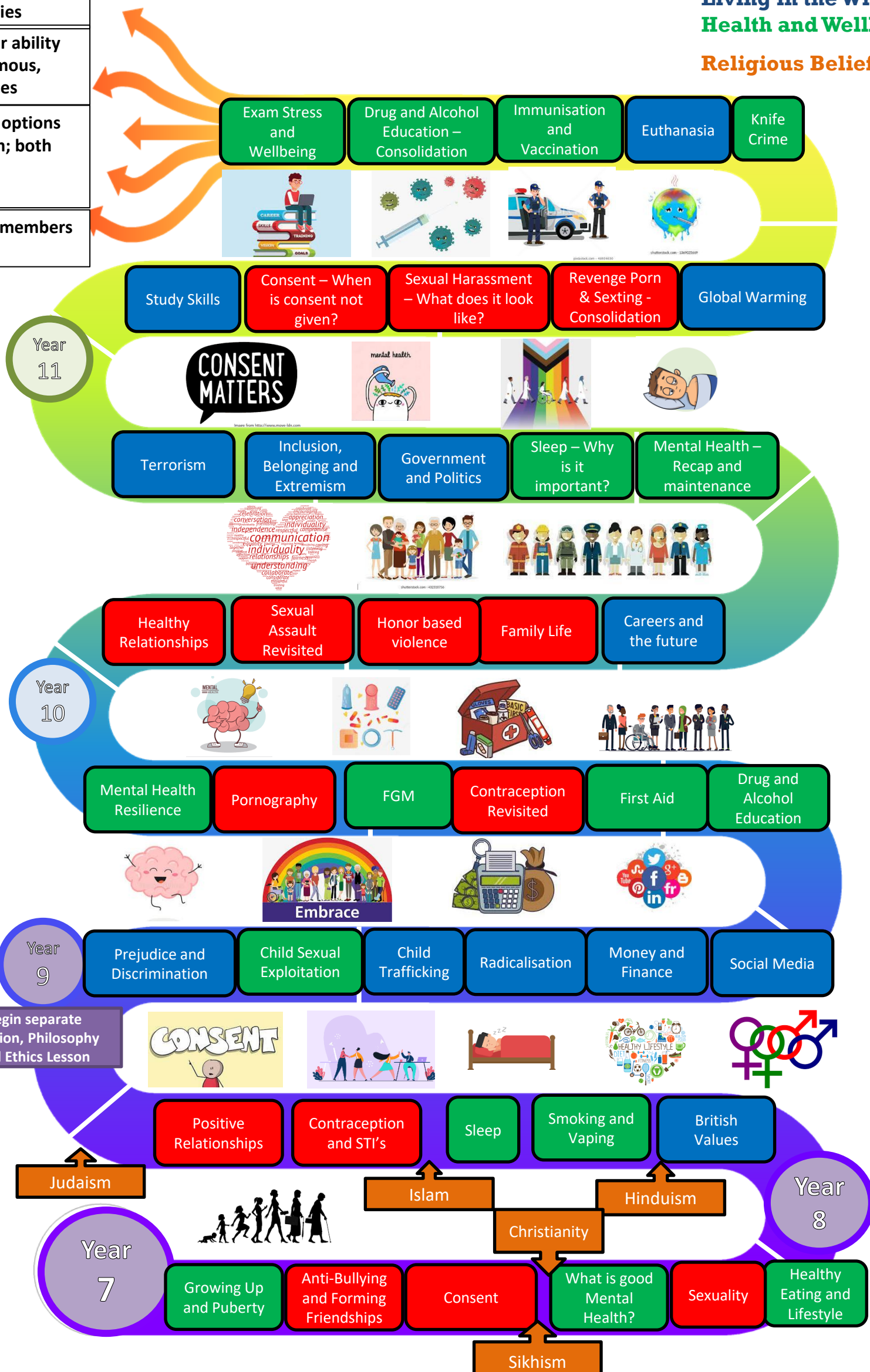


# Old Swinford Hospital – Beliefs and Issues Learning Journey

How should our students leave OSH?

**B and I Learning Objectives**  
**Positive Relationships**  
**Living in the Wider World**  
**Health and Wellbeing**  
**Religious Beliefs**

- Confident in their rights and responsibilities
- Confident in their ability to make autonomous, considered choices
- Confident of the options available to them; both personally and professionally
- Respectful to all members of society



Begin separate Religion, Philosophy and Ethics Lesson